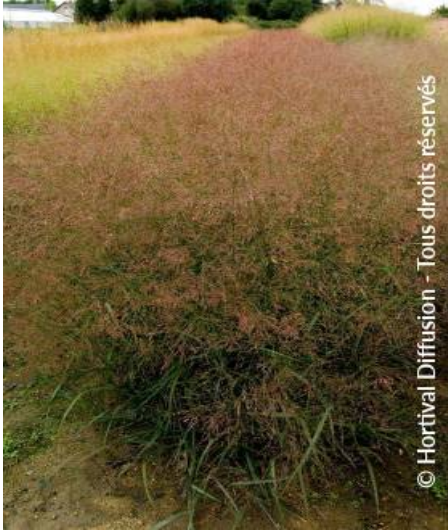
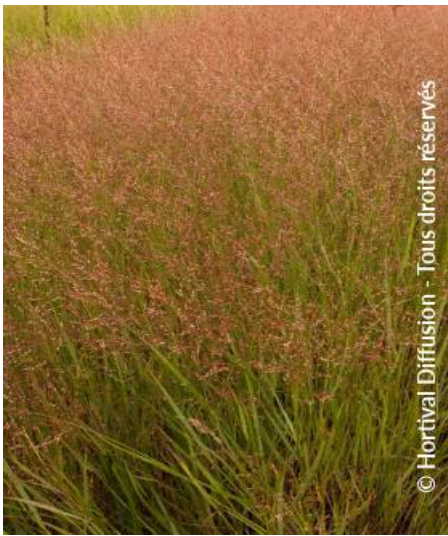


PANICUM virgatum 'HEILIGER HAIN'

Switchgrass 'Heiliger Hain'



© Hortiva Diffusion - Tous droits réservés



© Hortiva Diffusion - Tous droits réservés



© Hortiva Diffusion - Tous droits réservés



Maintenance advice: Remove the dead reeds at the end of winter. Water abundantly and regularly for the first 2 years.



Botanical/Horticultural origin: Horticultural origin : breeder Friedrich Camehl (DE) 2001



Use group: Bamboo and Grass



Height at 10 years: 1,5 m



Width at 10 years: 1 m



Growth: Fast



Fragrance: No



Exposure: Sun - Half shade



Evergreen/Deciduous:
Deciduous



Shape: bush, spreading



Colour of leaves: Red



Colour of flowers: Red



Soil type: Indifferent



Uses: Border, Rockery,
Tub/container



Calendar :

J

F

M

A

M

J

J

A

S

O

N

D

